

3-in-1 Cluster Antenna

MJS-065R18KV

XPol, 1710-2170MHz, 65°, 18.0dBi



Technical Specifications

Electrical

Frequency Range	MHz	1710-1880	1850-1990	1920-2170
Polarization			± 45	
Gain	dBi	17.5	17.7	18.0
Horizontal Beamwidth	deg	65		
Vertical Beamwidth	deg	7		
Electrical Downtilt Range	deg	2-10		
First Upper Sidelobe Suppression	dB	> 16		
Front-To-Back Ratio	dB	> 25		
VSWR		≤ 1.5:1		
Isolation Between Ports	dB	> 25		
Cross-polar Discrimination @ 0°	dB	> 15		
3rd Order Intermodulation @ 2x43dBm	dBc	< -150		
Maximum Power Per Port	W	250		
Impedance	Ω	50		
Lightning Protection		Direct Ground		

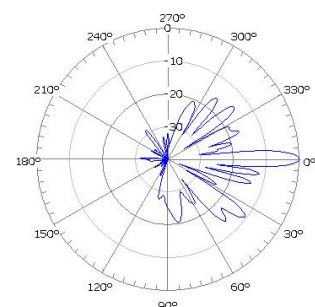
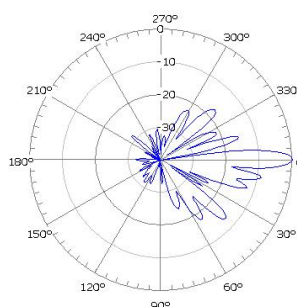
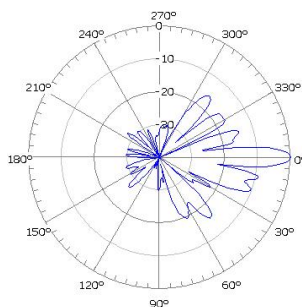


Mechanical

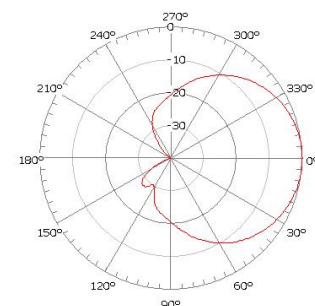
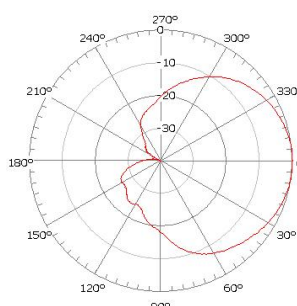
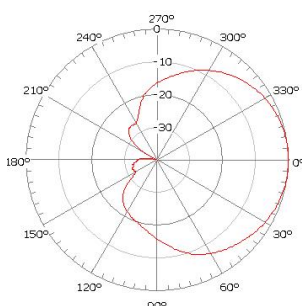
Dimensions, HxDia	Antenna	mm (in)	1771×358 (69.7×14.1)
	Pedestal		320×370 (12.6×14.6)
Weight	Antenna	kg (lb)	38 (83.8)
	Pedestal		26 (57.3)
Radome Material and Color			Fiberglass, White
Azimuth Adjustment per Antenna	deg		± 20
Reflector Material			Aluminum
Radiating Element Material			Zinc Composite
Connector Type and Location			6 x 7/16 DIN-Female, inside of chassis
Operational Temperature	°C		-55 to +70
Operational Humidity	%		≤ 95
Operational Wind Speed	km/h (mph)		200 (124.3)
Shipping Dimensions, HxWxD	Antenna	mm (in)	2100×740×740 (82.7×29.1×29.1)
	Pedestal		340×390×390 (13.4×15.5×15.5)
Shipping Weight	Antenna	kg (lb)	45 (99.2)
	Pedestal		28 (61.7)

Antenna Pattern

Vertical pattern



Horizontal pattern



1710MHz @ 0°

1920MHz @ 0°

2170MHz @ 0°

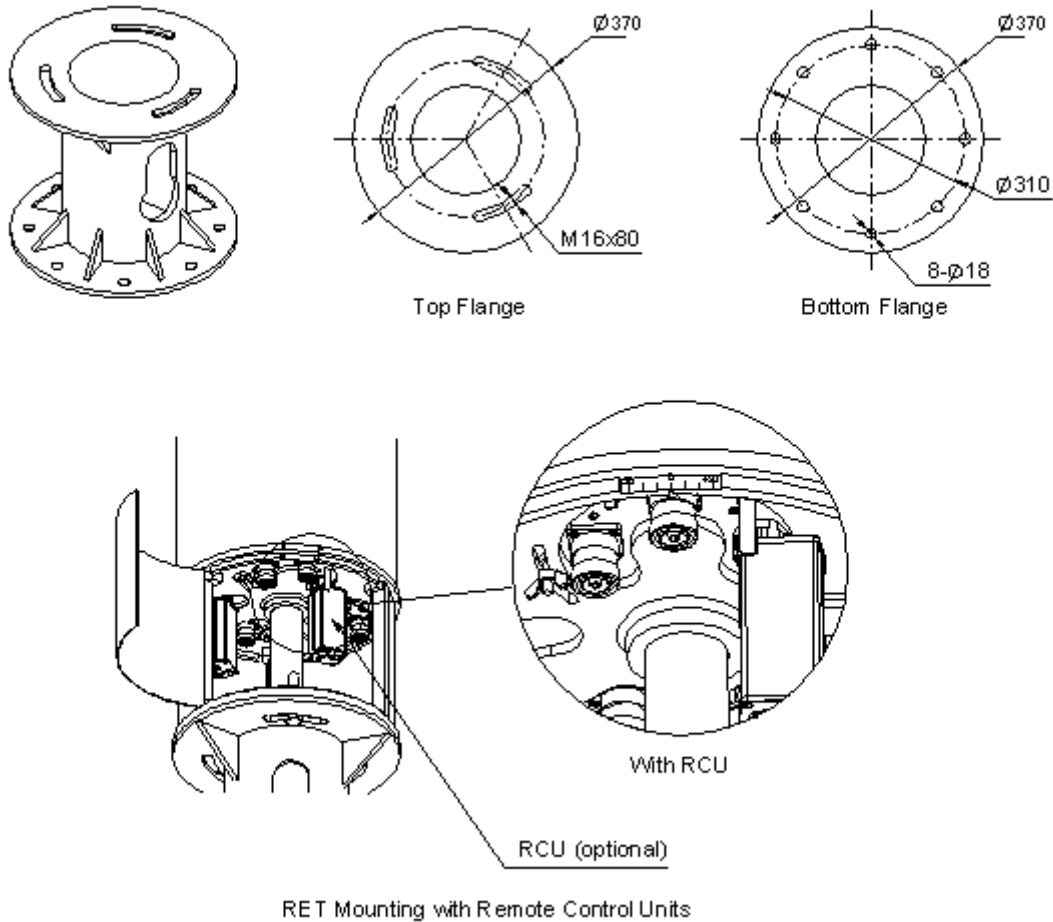
3-in-1 Cluster Antenna

MJS-065R18KV

XPol, 1710-2170MHz, 65°, 18.0dBi

Comba

Pedestal and Mounting Details



Optional Accessories

The following components may be ordered separately:

- Remote Control Unit : RCU-003, RCU-V5002
- Center Control Unit : CCU-001AG, CCU-003AG
- Smart Bias Tee : BT-M1S, BT-M2S
- RET Manager : COMETS
- AISG Jumper and cable

For more information, please refer to "Comba RET document".